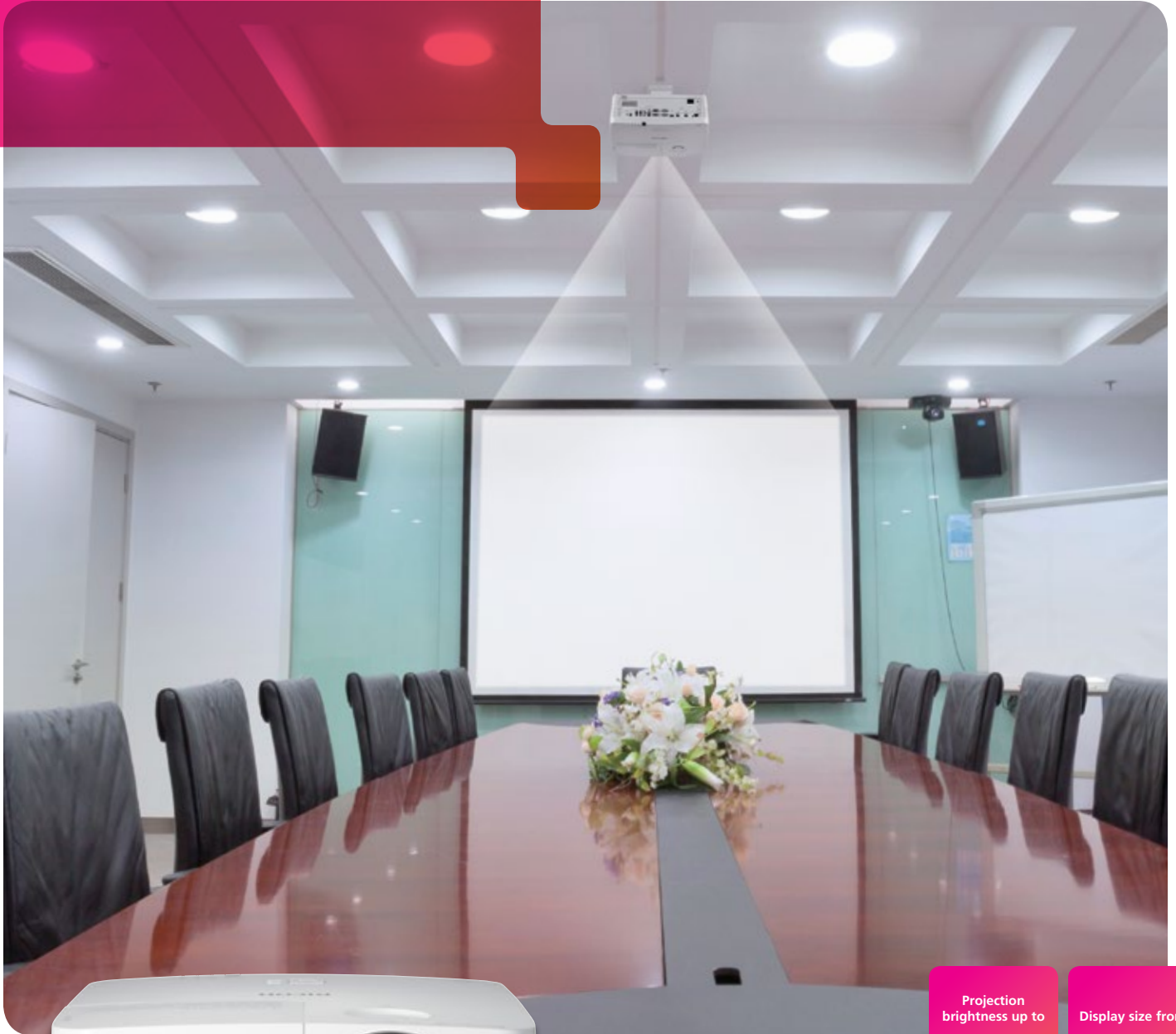


High End Projection System

# RICOH PJ X5580/ PJ WU5570

**RICOH**  
imagine. change.



Projection  
brightness up to  
**6,000lm**

Display size from  
**30" -300"**

Connectivity  
**HDMI**

Compatible  
**PJLink**  
Management  
Software

## Shed more light on your next presentation

You worked hard to craft a smart, compelling message. Now it's time to ensure your audience sees it the same way you do. Choose the RICOH® PJ X5580/PJ WU5570 to showcase every presentation with vibrant colors, brighter lighting and greater contrasts, so everybody in the room can see every line, image and detail clearly — even when you present in difficult ambient lighting. Use this high-end projection system to customize presentations in mid-size conference rooms, training centers, classrooms, auditoriums, exhibition halls and more. Take advantage of multiple connections, DLP technology, flexible installations and managed utilities, so nothing gets between your message and your audience.

### Make everything shine brighter

Don't let outside forces affect how your audience sees you and your ideas. Whether you're in a windowless room, spacious auditorium or sun-drenched showroom, you can light up your presentation with up to 6,000 lumens to produce brilliant images with rich, vibrant colors unaffected by ambient lighting. Do your attendees need to take notes? Just leave the room lights on while presenting. Colors stay bright and vivid without washing out on screen and a 9,000:1 contrast ratio delivers clear delineation between light and dark colors, so your text and graphics are crisp and clearly visible for your entire audience — from the first row to the last.



### Deliver a clearer message

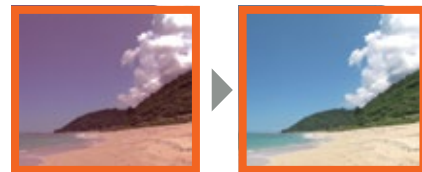
All eyes are on your presentation. Keep them there with high-quality DLP technology for precise images and visuals without lag time. With the PJ X5580, you can showcase action-packed movies, brilliant images, detailed schematics and more in 4:3 aspect ratio as large as 300" diagonally at up to 1024 x 768 dpi (XGA). Use the PJ WU5570 for even more lifelike reproductions in high-definition with 1920 x 1080 dpi (WUXGA) image resolution and 16:10 aspect ratio to captivate your audience and make your presentation more memorable.



### Keep the focus on the information

The moment your audience notices a distorted or poorly lit image, they're no longer paying attention to your message. So remove those distractions. The PJ X5580/PJ WU5570 balances itself to reduce distortion. Or, you can make your own adjustments to trapezoidal distortion using a four-point correction function. Color will never be a problem on most surfaces. When projected colors are adjusted, every image pops regardless of the wall color, screen color or blackboard where it's being viewed. With the Keystone Correction Image Adjustment, you can even project on non-traditional objects, such as columns and beams, without losing any of the sharpness or clarity from conventional screenings.

#### Wall Color Adjustment



# Choose the clear choice for high-quality, low-maintenance projection

## Connect with more people, more ways

Whether you're sharing financials from a black-and-white spreadsheet or an action-packed car chase from a recent blockbuster, make sure your audience doesn't miss a thing. Use one of the many HDMI connection ports on the PJ X5580/PJ WU5570 to plug in almost any camera, DVD player, computer or other media device and impress your audience with the information they want presented in the format they prefer. The system also comes with powerful, built-in, 10-watt speakers, so audio resonates even in large auditoriums, atriums and conference centers.



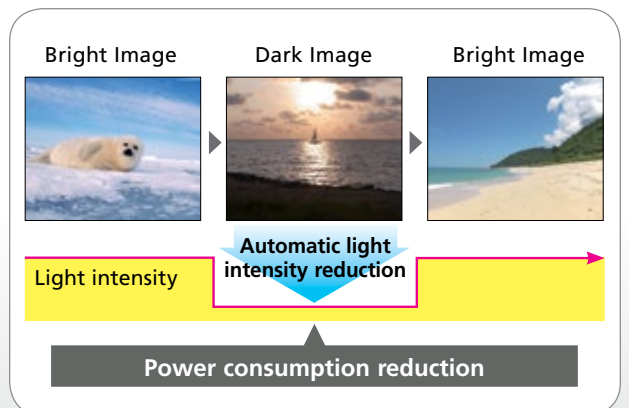
## Get your message out quickly

Your audience gathered to see your message, not to see you fumbling with the projector's controls. Mount the PJ X5580/PJ WU5570 so it's always ready to go when you are, without searching for cords or waiting for IT assistance. With on-screen prompts and one-touch remote controls, you can dive right into your presentation with ease, without unnecessary distractions or delays. If you do get stuck, help is right there — even if it's coming from far away. Administrators can use optional management software — including PjLink™, and Crestron RoomView® — to check status, adjust settings and even power the unit on or off from a remote location so you can concentrate on your core tasks, including keeping your audience engaged.



## Use less energy

Energy can add a jolt to your presentation. But you'll need to provide it — the PJ X5580/PJ WU5570 runs quietly while using less energy in Eco Mode. It starts up and shuts down quickly, without residual noise that can interfere with your discussions. Toggle to Eco Mode to reduce the amount of energy the projection system uses for each image. For example, darker images require less light, so less energy is needed. Plus, Eco Mode extends lamp life expectancy to up to 4,000 hours.



# RICOH PJ X5580/PJ WU5570

## SYSTEM SPECIFICATIONS

Model		PJ X5580	PJ WU5570
Projector Part Number		432044	432047
Replacement Lamp Part Number <sup>1</sup>		512899	
System		Single Chip DLP <sup>®</sup>	
Resolution		XGA – 1024 x 768 dpi	WUXGA – 1920 x 1200 dpi
Liquid Crystal Panel	Size	0.70"	0.67"
	Aspect Ratio	4:3	16:10
White Light Output (Brightness)		6,000 Lumens	5,500 Lumens
Contrast Ratio		9000:1	
Screen Size		30" to 300"	
Projection Mode		Standard, Rear, Ceiling, Rear Ceiling	
Projection Distance (from rear of unit to projection surface)		3.28 to 44.29 feet (1 – 13.5 meters)	
Projection Ratio		1.241 – 2.222	
Lamp Type		High-pressure Mercury	
Lamp Wattage	Standard Mode	365 W	
	Eco Mode	292 W	
Lamp Life	Standard Mode	3,000 hours	
	Eco Mode	4,000 hours	
Projection Lens	Lens	Built-in	
	Keystone	Vertical/Horizontal	
	Shift/Method	Vertical and Horizontal/Manual	
	Zoom Ratio	1.8	
	Zoom/Focus	Manual/Manual	
Interface	Input Signals	NTSC, PAL, SECAM, NTSC4.43, PAL-M, PAL-N, PAL-60, 60 Hz (mono), 50 Hz (mono)	
	Analog RGB Compatible Scanning Frequency	Horizontal: 30 – 100 Hz, Vertical: 50 – 85 Hz (3D mode:120 Hz)	
	Image Input	HDMI/MHLx1, HDMIx1, D-SUB 15-pin x 2, Display port x 1	
	Image Output	D-SUB 15-pin x 1	
	Video Input	RCA x 1, S-VIDEO mini DIN 4-pin x 1	
	Audio Input	3.5 mm Stereo mini jack x 2, RCA (L/Mono) x 1, RCA (R) x 1	
	Audio Output	3.5 mm Stereo mini jack x 1	
	Microphone Input	3.5 mm mini jack x 1	
	USB	Type minB x1 (for firmware update)	
	Wired LAN	RJ45 x 1 (for Network Management)	
	PC Control	D-sub 9-pin x 1 (RS-232C)	
	Other Ports	Mini DIN 3-pin x 1 (for 3D sync) 3.5 mm mini jack x 1 (for 12V triggers)	
	Supported OS	Advanced Network Utility	N/A
JPEG Conversion Utility		N/A	
Projector Management Utility		Windows® Vista Ultimate/Business/Home Premium/Home Basic (32bit/64bit), Windows 7 Home Premium/Professional/Ultimate/Enterprise (32bit/64bit), Windows 8 Pro/Enterprise (32bit/64bit), Windows 8.1 Pro/Enterprise (32bit/64bit), Windows Server 2008 Standard SP2 and later versions (32bit/64bit), Windows Server 2008 R2 Standard SP1 and later versions (64bit)	
Built-in Speaker		10 W x 2	
Dimensions (WxDxH)		16.7" x 14" x 5.9" (424 x 356 x 150 mm)	
Weight		13.97 lbs. (6.35 kg)	
Power Source		100 – 240 V, 50/60 Hz	
Power Consumption	While Operating	Standard Mode: 450 W (495 W max.)/Eco Mode: 360 W (395 W max.)	
	Standby Network Off	0.5 W or less (Monitor Out Off)/1.0 W or less (Monitor Out On)	
Storage & Transportation Environment		Temperature 5 – 40° C; Humidity: 20 – 80%	
Fan Noise		Standard/Eco Mode: 35/32 dB	
Features		AV Mute, Freeze, Re-size (Magnify), Manual Keystone (vertical/horizontal), Auto Keystone (vertical), Password Protection, Wall Color Mode, Kensington Lock, User Logo, Eco Mode, 3D Projection Ready, Firmware Update (USB)	
Included with Projector		365 W high-pressure mercury lamp, RGB VGA and power cables, remote with batteries, filter, lens cap, CD-ROM with Operating Instructions and Projector Management Utility, Quick Start Guide, Customer Registration and Warranty Sheet (US only)	

<sup>1</sup>: Lamps are consumable products and therefore are not covered by the projector's warranty.

**Limited Warranty:** The RICOH PJ X5580/PJ WU5570 is under warranty against defects for a period of three years from the date of purchase. Consumables are under warranty for a period of 90 days from the date of purchase or until depleted, whichever comes first. Please refer to warranty documents shipped with the product for more details.

For maximum performance and yield, we recommend using genuine Ricoh parts and supplies.

**RICOH**  
imagine. change.

[www.ricoh-usa.com](http://www.ricoh-usa.com)

Ricoh Americas Corporation, 70 Valley Stream Parkway, Malvern, PA 19355, 1-800-63-RICOH  
RicoH® and the RicoH Logo are registered trademarks of Ricoh Company, Ltd. All other trademarks are the property of their respective owners. ©2015 Ricoh Americas Corporation. All Rights Reserved. The content of this document, and the appearance, features and specifications of Ricoh products and services are subject to change from time to time without notice. Products are shown with optional features. While care has been taken to ensure the accuracy of this information, Ricoh makes no representation or warranties about the accuracy, completeness or adequacy of the information contained herein, and shall not be liable for any errors or omissions in these materials. Actual results will vary depending upon use of the products and services, and the conditions and factors affecting performance. The only warranties for Ricoh products and services are as set forth in the express warranty statements accompanying them.

R3609